

Speed-by-Street™

Posted Speed Limit Database / API Service



THE MOST ACCURATE AND
UP-TO-DATE DATABASE
OF POSTED SPEED LIMITS

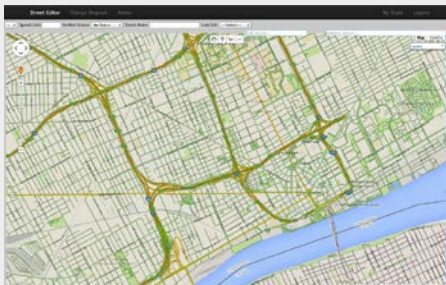
Speed-by-Street™ Posted Speed Limits

Speeding is a problem that affects every fleet or vehicle owner. It is costly, harmful to the environment, and results in over 12,000 deaths each year in the United States alone.

Driver safety programs and driver scorecards are only as accurate as the data they are based upon. Speed-by-Street™ is the only solution that accurately captures and reports the most up-to-date speed limits posted on roads across North America – this proprietary database is now available for licensing.

Hosted on the DriveAware™ server the post-process service provides information on speed infractions based on queries sent from the customer server. Defined API query and answer formats allow simple integration of crucial speeding information in nearly all existing Fleet-Management and Telematics platforms.

Using Speed-by-Street™ verified speed limits as a basis for driver monitoring, scoring and mentoring is the only way to accurately identify speed infractions on all road types. Only those monitoring systems that correctly and indisputably identify speed infractions will be accepted from the drivers and be able to positively influence the driver behavior.



- Superior database for VERIFIED posted speed limit data
- Highest accuracy and reliability for all road types
- Available map sources mostly focus on “A-roads” (freeways and major highways)
- Currently available for North America (US and Canada)
- 95% of all North American road segments verified by early 2016
- Other regions coming soon
- Over 99% of the evaluated speed infractions are correctly identified for current customers
- Near real time service - available 24/7 - no overnight processing of requests
- Constant database updates

Why is the DriveAware™ database so much more accurate?

DriveAware™'s database is compiled with a dedicated team of editors that is constantly verifying, correcting and expanding the available data – day by day.

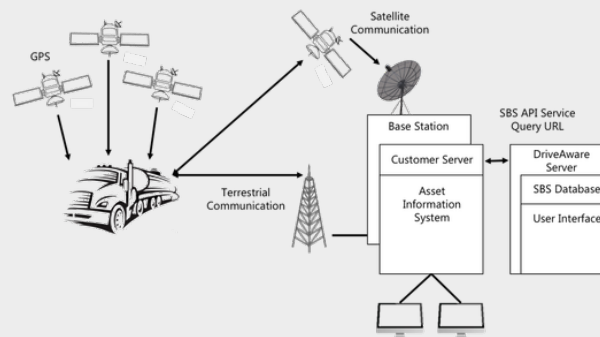
The DriveAware™ database is compiled with a dedicated team of editors that is constantly verifying, correcting and expanding the available data – day by day. Verification with state and municipal authorities, virtual driving and customer feedback are the cornerstones for reaching maximum accuracy in our database. Validation of street segments based on human eye confirmation of the posted speed limits is the only reliable way to achieve complete and accurate coverage. For current customers speed infractions are identified correctly for 99.9% of the distance traveled.

Speed-by-Street™ API Service Description

Speed-by-Street™ (SbS) API Service is a RESTful API web service, which analyzes vehicle-tracking data and provides violation descriptions in instances where a vehicle is speeding.

Speed-by-Street™ reports are based on posted speed limits on known road segments. They do not cover dynamic speed limits such as speed limit changes depending on traffic flow, or time dependent speed limits such as school zones.

Speed-by-Street™ API currently supports interaction between customer server and DriveAware server. Interaction between a device/vehicle and the DriveAware server is possible but may not be used for real-time verbal mentoring applications (license required). SbS REST API is a near real-time service not intended to provide true real-time interaction.



Queries and responses to and from the Speed-by-Street™ (SbS) API Service contain several mandatory and optional attributes

Queries

- Mandatory Attributes
 - VehicleID: Unique vehicle/device identifier
 - TrackID: Identifies track to analyze, can be defaulted if not used
 - Speed: Speed traveled by vehicle
 - isKph: Driven speed in KPH or MPH
 - Lat/Long: Location information
- Optional Attributes
 - ID: E.g. location-ID - used for customer's internal purposes
 - VehicleType
 - DateTime
 - Heading

Response Fields

- Used query attributes will be repeated in answer format
- isSpeeding: Vehicle violated posted speed limit (true/false)
- SpeedLimitKPH: Posted speed limit if in KPH
- SpeedLimitMPH: Posted Speed Limit if in MPH
- isVerified: Returned speed limit on verified road segment (true/false)
- Error: Identifies successful request
- Error code: Identifies errors in request

Maximum query size in Speed-by-Street™ API

SbS REST API is a near real-time service:

- not intended to provide true real-time interaction
- serves data requests on a first-in-first-out basis
- generally accessible 24hrs daily – 7 days a week
- no limitation on numbers of queries submitted from customer
- SBS API requests are limited to a maximum of 10,000 locations per query
- response times for the maximum number of locations can be expected to be around 30-45 seconds
- response times are subject to several variables that are not controlled by DriveAware™